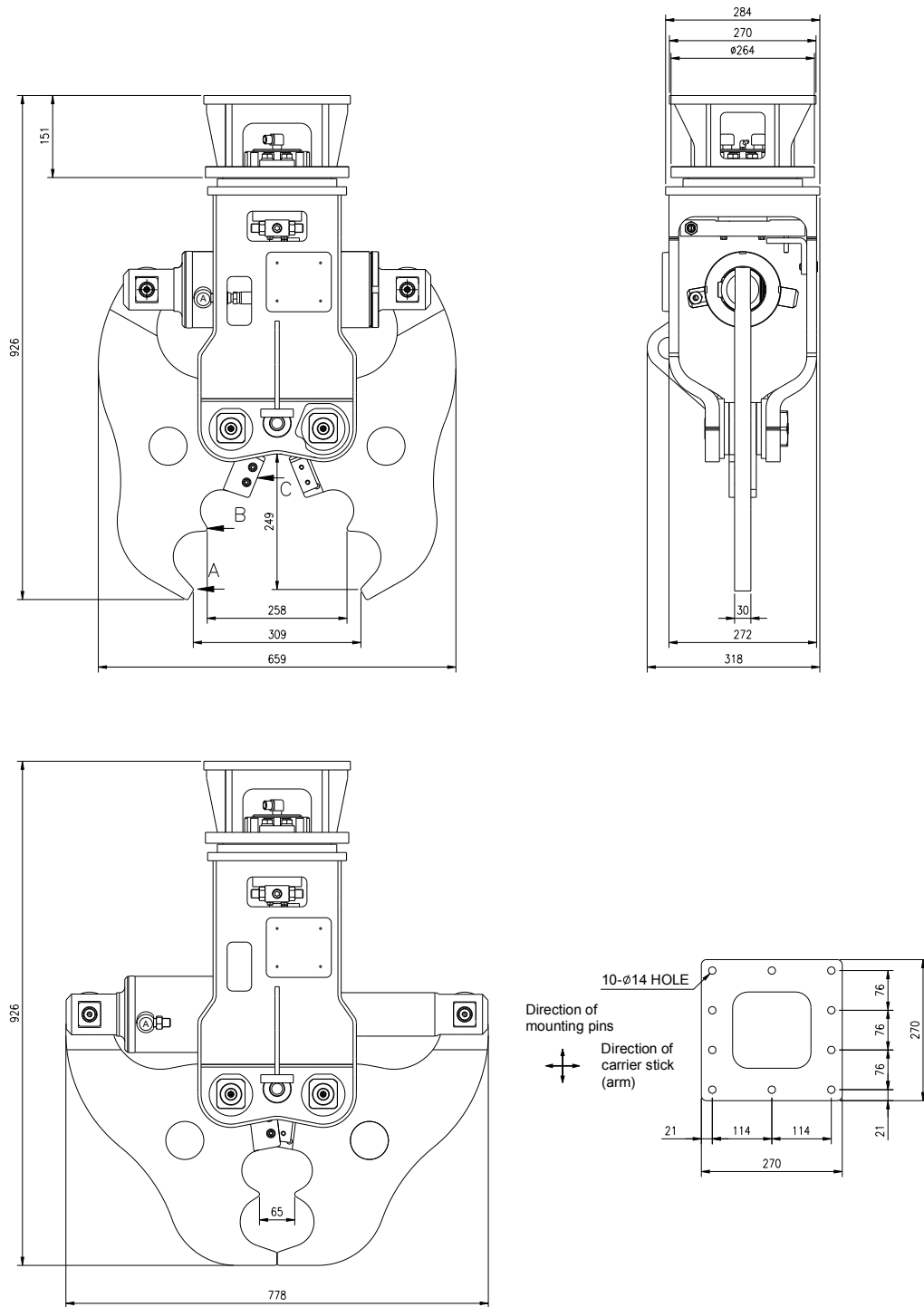


SH#	HC-T030-E5
Cre. Date	2007-09-12
Rev. Date	2012-08-16
Page	1 of 3

### 1. EXTERNAL DIMENSIONS

Units : mm

- EHC015 Adapt Mount Type



EHC015-A-2

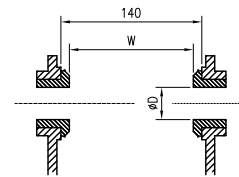
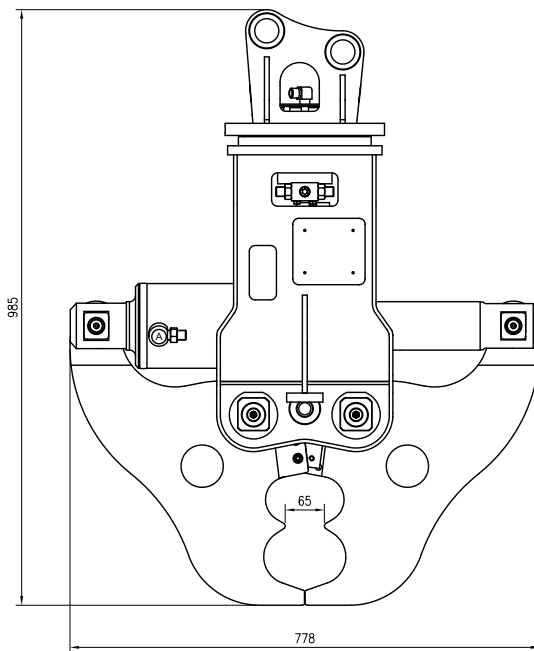
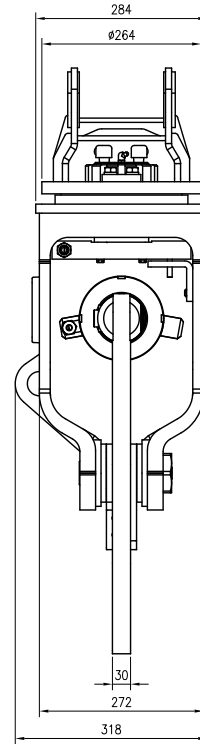
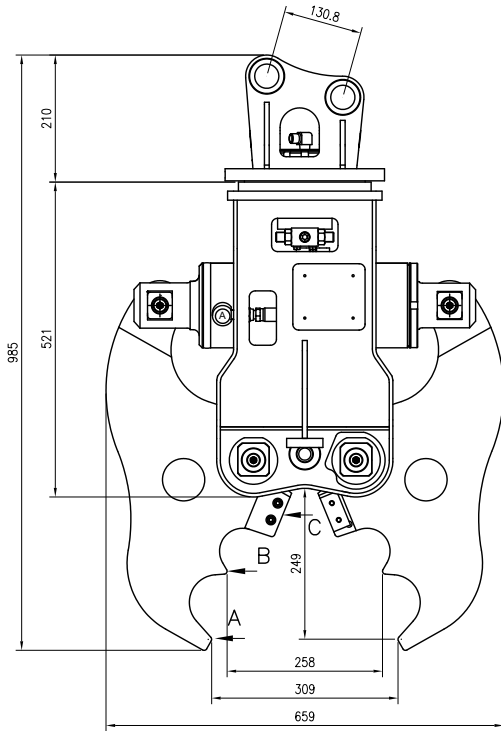


# EHC 015 Technical Specifications

SH#	HC-T030-E5
Cre. Date	2007-09-12
Rev. Date	2012-08-16
Page	2 of 3

● EHC015 Direct Mount Type

Units : mm



W = 98 ~ 140  
D = 25 ~ 40

PMC015-D-1



# EHC 015 Technical Specifications

SH#	HC-T030-E5
Cre. Date	2007-09-12
Rev. Date	2012-08-16
Page	3 of 3

## 2. SPECIFICATIONS

Crusher Model		EHC 015			
		Adapt Type		Direct Type	
Weight	kg (lbs)	149 (329)	143 (315)		
Overall Length	mm (in.)	926 (36.5)	985 (38.8)		
Overall Width	mm (in.)	659 (25.9)			
Max. Jaw Opening	mm (in.)	309 (12.2)			
Max. Jaw Depth <sup>1)</sup>	mm (in.)	249 (9.8)			
Effective Jaw Width <sup>2)</sup>	mm (in.)	30 (1.2)			
Cutter Blade Length	mm (in.)	60 (2.4)			
Max. Force at ...		at 210 bar			
point A (Outer Tip)	tonnes (tons)	21 (23)			
point B	tonnes (tons)	33 (36)			
point C	tonnes (tons)	67 (74)			
Oil Flow	lpm (gpm)	15 ~ 35 (4.0 ~ 9.2)			
Max. Operating Pressure	bar (psi)	210 (3,045)			
Max. Cylinder Force	tonnes (tons)	24 (26)			
Jaw Cycle Time (at Q <sub>normal</sub> )		(at 25 lpm)			
Opening	sec	3.2			
Closing	sec	5.7			
1 Cycle	sec	8.9			
Rotating Angle		360° continuous			
Operating Oil Temperature	°C (°F)	-10 ~ 90 (14 ~ 194)			
Recommended Carrier Weight	tonnes (tons)	1.5 ~ 2.0 (1.7 ~ 2.2)			

Notes :

- 1) The length measured from throat to the outer tip
- 2) Effective width of the working portion of jaw which contacts with material