




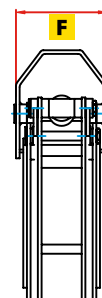
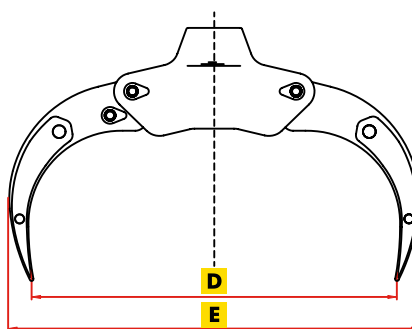
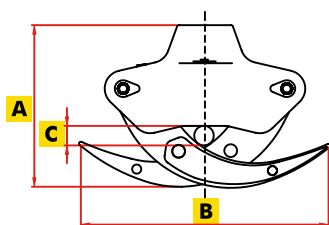


PINZA mod TM

PINZE

-  Pinza tronchi con cilindro orizzontale
-  Log grab with horizontal cylinder
-  Holzzange mit liegendem Zylinder
-  Pince à bois avec vérin horizontal
-  Pinza para madera con cilindro horizontal



portata gru a braccio sfilato / *lifting capacity at the end of boom*
 peso escavatore / *excavator weight*

Modello Type	Cap. M ²	Portata Kg Load	Peso Kg Weight	Max Bar	A	B	C	D	E	F
TM 1000	0,15	800	70	180	430	600	55	925	1090	385
TM 1300	0,20	1500	118	180	490	690	120	1320	1430	450
TM 1500	0,30	2500	138	180	590	860	130	1500	1645	510